



2 Bank House Road, Walkley, Sheffield, S6 3TL

Saxton Mee

2 Bank House Road Walkley

Guide Price

£225,000

GUIDE PRICE - £225,000 - £235,000

Nestled in the heart of the ever-popular residential area of Walkley, this fabulous two-bedroom semi-detached home offers stylish living, a delightful garden, and wonderful open views—perfect for first-time buyers, downsizers, or anyone seeking a charming home in a thriving community.

Beautifully arranged over two floors, the property features a welcoming entrance hallway leading into a bright and well-proportioned dual aspect living room, ideal for relaxing or entertaining. The modern kitchen enjoys a pleasant outlook and provides direct access to the rear garden. A convenient ground-floor WC completes the downstairs accommodation.

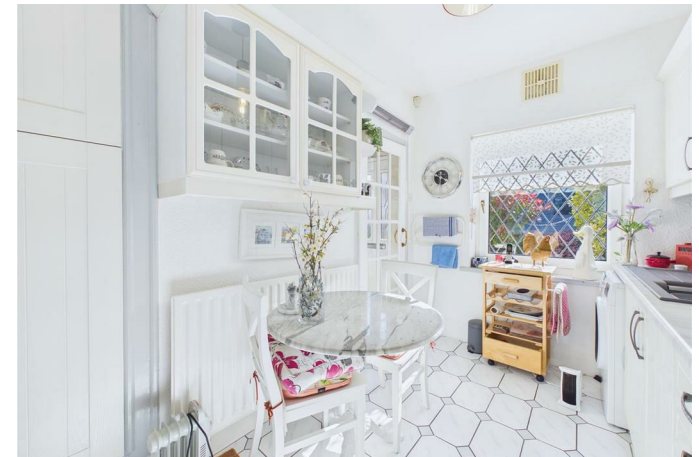
Upstairs, the property boasts two generous bedrooms, including a spacious main bedroom with dual aspect windows and fabulous views to the rear and excellent natural light, alongside a well-appointed bathroom. The layout offers versatility for guest accommodation, a home office, or a nursery.

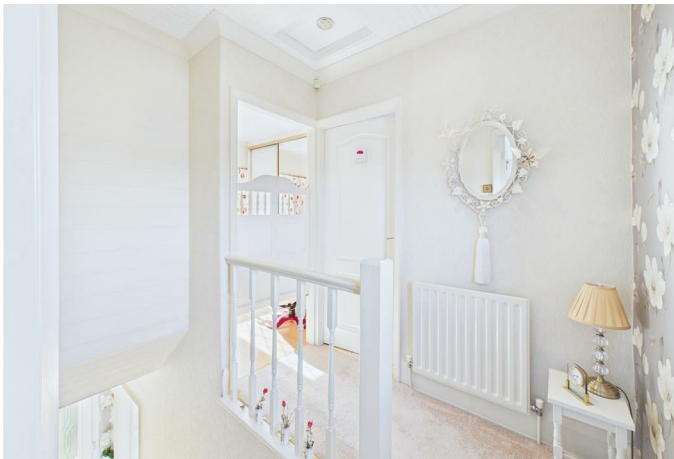
Outside, the delightful rear garden is a true highlight—offering a lovely space to unwind, dine outdoors, or enjoy the views across the surrounding area. With its peaceful feel and attractive outlook, it provides a wonderful extension of the living space.

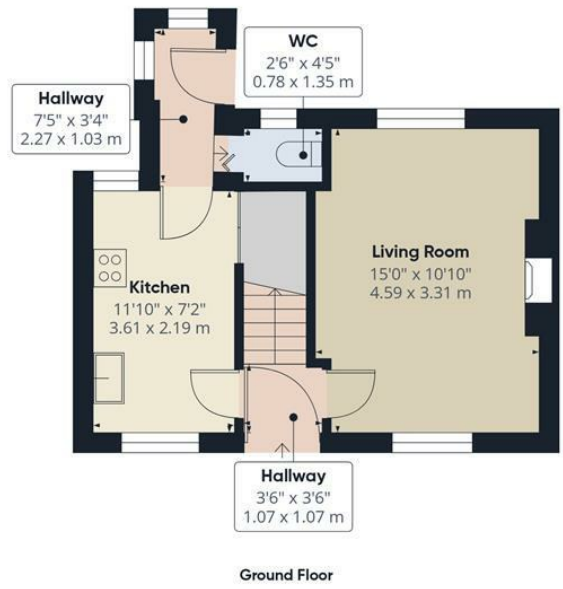
Located just moments from Walkley's array of independent shops, cafés, pubs, and excellent transport links, this home combines comfort, convenience, and character in equal measure. A superb opportunity not to be missed.



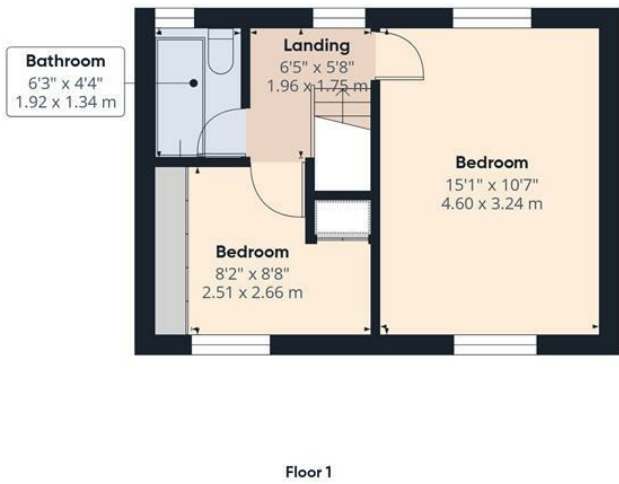
- Prime Walkley Location – Nestled in a popular residential area, close to shops, cafés, pubs, and excellent transport links.
- Two-Bedroom Semi-Detached Home – Perfect for first-time buyers, downsizers, or those seeking a charming property.
- Dual-Aspect Living Room
- Downstairs WC
- Dual-Aspect Main Bedroom – Generously sized with excellent natural light.
- Immaculately presented throughout and clearly well loved and maintained
- Delightful Rear Garden – Perfect for outdoor dining, relaxing, and enjoying peaceful views across the surrounding area.







Approximate total area^m
606 ft²
56.3 m²



(1) Excluding balconies and terraces

Calculations reference the RICS IPMS 3C standard. Measurements are approximate and not to scale. This floor plan is intended for illustration only.

GIRAFFE360



While we endeavour to make our sales particulars fair, accurate and reliable, they are only a general guide to the property and, accordingly, if there is any point, which is of particular importance to you, please contact the relevant office. The Agents have not tested any apparatus, equipment, fittings or services and so cannot verify they are in working order. The buyer is advised to obtain verification. Please note all the measurement details are approximate and should not be relied upon as exact. All plans, floor plans and maps are for guidance purposes only and are not to scale. Under no circumstances should they be relied upon as exact or for use in planning carpets and other such fixtures, fittings or furnishings. YOUR HOME IS AT RISK IF YOU DO NOT KEEP UP REPAYMENTS ON A MORTGAGE OR OTHER LOAN SECURED ON IT. 'A Life Assurance policy may be requested.' 'Written Quotations of credit terms available on request.'

Banner Cross
T: 0114 268 3241
E: bannercross@saxtonmee.co.uk
www.saxtonmee.co.uk

Hathersage
T: 01433 650009
E: hathersage@saxtonmee.co.uk

Bakewell
T: 01629 815307
E: bakewell@saxtonmee.co.uk

Matlock
T: 01629 828250
E: matlock@saxtonmee.co.uk

